

FULL CONE NOZZLES

BX

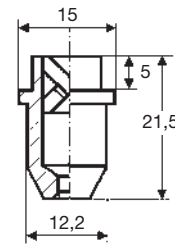
NOZZLE TIPS

Full cone tips produce a uniform full cone shaped spray with a round impact area.

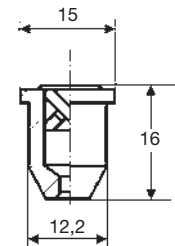
Complete nozzles made out of nozzle tip, seal, nipple and retaining nut. This design allows the nozzle to be disassembled and readily cleaned in case of clogging, for fast and easy maintenance.

In addition to metal nipples a range of pipe clamps is available, please see our Accessories Catalogue CTG AC20.

Materials **B1** **AISI 303 Stainless steel**
 T1 **Brass**



**BX
1508
1743**



**BX
1149
1372**

Code	D mm	Capacity at pressure					Spray angle at different pressure			
		1.0	2.0	3.0	5.0	10	1.5	3.0	5.0	
60°										
BXQ 1149 xx	1.3	0.86	1.22	1.49	1.92	2.72	50	50	45	
BXQ 1223 xx	1.7	1.35	1.90	2.33	3.01	4.25	65	65	49	
BXQ 1262 xx	1.7	1.51	2.14	2.62	3.38	4.78	50	50	46	
BXQ 1372 xx	2.1	2.15	3.04	3.72	4.80	6.79	65	65	59	
BXQ 1508 xx	2.4	2.93	4.15	5.08	6.56	9.30	50	50	46	
BXQ 1626 xx	2.9	3.61	5.11	6.26	8.08	11.4	60	60	55	
BXQ 1743 xx	2.9	4.29	6.07	7.43	10.0	14.0	67	67	61	

Under certain conditions, for example nozzle working upside-down at high temperature or subjected to sudden vacuum in pipes, the nozzle vane can escape from the body and impair the nozzle operation.

As an added safety feature our full cone nozzles with X-vane, up to the 3/8" thread size, have the vane safely secured in places.



BJ

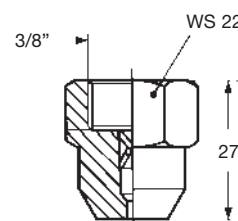
THREADED NOZZLES

Most sizes in the BX range can be obtained as a two-piece nozzle, with a 3/8" female thread.

Capacity and spray angle maintain exactly the same values, nozzle identification code is BJQ.

This is convenient where a damaged nipple does not allow for a tight assembly, and avoids the need for disassembling the pipe and replace the defective nipple, while keeping approximately the same distance between the nozzle orifice and the spray target.

As an example, the nozzle with the same specifications of the BXQ 1372 T1 has the code BJQ 1372 T1.



ZAA 1738 xx



VAA 0038 xx

Assembly accessories

BX tips are normally secured with a retaining nut onto a welded nipple.

All details on accessories are shown in our Catalogue CTG AC20.