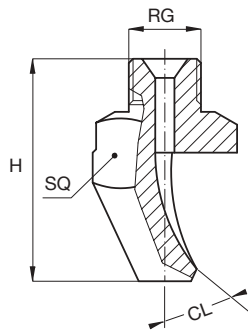


## FLAT JET NOZZLES

### K



#### HIGH IMPACT TYPES

K flat jet nozzles work on the deflection principle conveying a water vein onto a deflection surface designed to produce a narrow jet with flat spray pattern, high impact value and medium size droplets.

Their round outlet orifice and unobstructed inside passages minimize plugging risks.

K style nozzles shown in this page are available with a threaded connection and, for the capacity sizes shown in the table, with a quick coupling connection for assembly onto the matching quick connection nipple.

Materials	<b>B1</b>	AISI 303 Stainless steel
	<b>B3</b>	AISI 316 Stainless steel
	<b>T1</b>	Brass

#### Thread size code

<b>KOx</b>	1/8"
<b>KPx</b>	1/4"
<b>KQx</b>	3/8"
<b>KRx</b>	1/2"
<b>KSx</b>	3/4"
<b>KTx</b>	QC

#### How to compose the nozzle code

The nozzle shown on this page can be supplied with same capacity and a different connection thread, the size is indicated by the second digit in the nozzle code. Therefore, the nozzle code has to be identified as in the following example.

**KQB 2195 B3**  
|  
**3/8"**

#### Quick coupling nipples

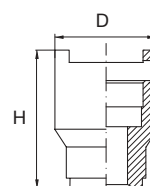
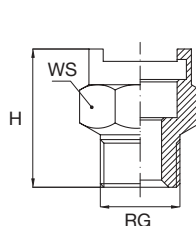
	Thread size inch	Standard size	Large size	H mm	WS mm	D mm
<b>Male nipple</b>	1/4	ZHS 0025 xx		29	22	
	3/8	ZHS 0038 xx		29	22	
	1/2		ZHS 0050 xx	35	30	
<b>Female nipple</b>	3/8	ZHT 0038 xx		29	22	
<b>Welding nipple</b>		ZHU 0038 xx	ZHU 0050 xx	32		28
<b>Seal (Viton) for SS nipples</b>	All	VDH 0026 E7	VDH 0050 E7			
<b>Seal (BUNA) for brass nipples</b>	All	VDH 0026 E8	VDH 0050 E8			



ZHS 0025 xx



ZHS 0050 xx



ZHU 0038 xx

## FLAT JET NOZZLES

## K

## HIGH IMPACT TYPES

◁	1/8"	1/4"	3/8"	1/2"	3/4"	QC	Code	DIA mm	Capacity at different pressure values							CL deg	H mm	SQ mm
									lpm bar									
									2.0	3.0	4.0	5.0	6.0	7.0	10			
15°		KPB KPB	KQB KQB KQB	KRB KRB KRB	KSB		1390	1.9	3.18	3.90	4.50	5.03	5.52	5.96	7.12	22	48	15
							1780	2.6	1780	6.37	7.80	9.01	10.1	11.0	11.9	14.2	19	54
		2117					3.2	9.55	11.7	13.5	15.1	16.5	17.9	21.4	25	72	20	
		2156					3.7	12.7	15.6	18.0	20.1	22.1	23.8	28.5	18	92		
		2195					4.2	15.9	19.5	22.5	25.2	27.6	29.8	35.6	15	90		
		2230					4.6	18.8	23.0	26.6	29.7	32.5	35.1	42.0	14	125	25	
		2310					5.3	25.3	31.0	35.8	40.0	43.8	47.4	56.6		130		
		2390					5.9	31.8	39.0	45.0	50.3	55.2	59.6	71.2		137		
2780	8.4	63.7	78.0	90.1	101	110	119	142	14	191	30							
25°		KPD					2156	3.7	12.7	15.6	18.0	20.1	22.1	23.8	28.5	25	65	20
35°	KOH	KPH KPH	KQH KQH KQH KQH KQH	KRH KRH KRH	KSH	KTH KTH	1160	1.2	1.31	1.60	1.85	2.07	2.26	2.44	2.92	40	23	12
							1390	1.9	3.18	3.90	4.50	5.03	5.52	5.96	7.12	36	37	15
		1780					2.6	6.37	7.80	9.01	10.1	11.0	11.9	14.2	30	43	20	
		1980					2.9	8.00	9.80	11.3	12.7	13.9	15.0	17.9	28	49		
		2117					3.3	9.55	11.7	13.5	15.1	16.5	17.9	21.4	28	52		
		2156					3.7	12.7	15.6	18.0	20.1	22.1	23.8	28.5	26	58		
		2195					4.1	15.9	19.5	22.5	25.2	27.6	29.8	35.6	23	64		
		2230					4.5	18.8	23.0	26.6	29.7	32.5	35.1	42.0	22	73	25	
		2310					5.3	25.3	31.0	35.8	40.0	43.8	47.4	56.6	24	81		
		2390					5.9	31.8	39.0	45.0	50.3	55.2	59.6	71.2	19	89		
2630	7.5	51.4	63.0	72.7	81.3	89.1	96.2	115	23	114	32							
2780	8.4	63.7	78.0	90.1	101	110	119	142	22	122								
40°		KQL KQL KQL KQL KQL KQL	KQL KQL KQL KQL KQL KQL				2156	3.7	12.7	15.6	18.0	20.1	22.1	23.8	28.5	35	60	25
							2195	4.1	15.9	19.5	22.5	25.2	27.6	29.8	35.6	33	64	
							2230	4.5	18.8	23.0	26.6	29.7	32.5	35.1	42.0	33	72	
							2270	5.0	22.0	27.0	31.2	34.9	38.2	41.2	49.3	29	75	
							2310	5.2	25.3	31.0	35.8	40.0	43.8	47.4	56.6	26	77	
							2350	5.7	28.6	35.0	40.4	45.2	49.5	53.5	63.9	28	77	
							2390	6.0	31.8	39.0	45.0	50.3	55.2	59.6	71.2	28	87	
50°		KPN KPN	KQN KQN KQN KQN KQN KQN				1390	1.9	3.18	3.90	4.50	5.03	5.52	5.96	7.12	60	31	15
							1980	2.9	8.00	9.80	11.3	12.7	13.9	15.0	17.9	42	41	20
		2156					3.7	12.7	15.6	18.0	20.1	22.1	23.8	28.5	45	47		
		2230					4.5	18.8	23.0	26.6	29.7	32.5	35.1	42.0	37	55	25	
		2390					6.0	31.8	39.0	45.0	50.3	55.2	59.6	71.2	40	72	30	
		2490					6.7	40.0	49.0	56.6	63.3	69.3	74.8	89.5	38	72		
		2630					7.5	51.4	63.0	72.7	81.3	89.1	96.2	115	37	72		
		2780					8.4	63.7	78.0	90.1	101	110	119	142	32	72		

**Nozzle dimensions**

Some nozzles may have different dimensions even when made with the same thread.

Dimensions given above refer always to the largest nozzle with a given thread size.

Please refer to our offices for detailed information.

**Typical Applications**

- Washing of fruits, vegetables, crushed stones and any other product moving on a conveyor.
- High pressure cleaning processes
- Felt washing in paper making machines.