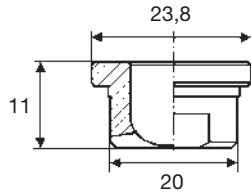
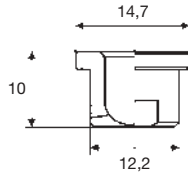


**FLAT JET NOZZLE TIPS**

**GX**



**How to compose the nozzle code**

The nozzle tips shown on this page can be supplied with six different spray angles, whose value is indicated by the third digit in the nozzle code. Therefore, the nozzle tip code has to be identified as in the following example.

**GXQ 1780 B31**

60°

The codes for the different spray angle values are listed in the table adjacent.

**STANDARD AND LARGE CAPACITIES**

Flat jet nozzle tips are usually mounted onto a pipe by means of a welded 3/8" nipple or a clamp, and secured in place with a retaining nut. Seals are available for higher pressure operation, see bottom table next page. They can therefore easily be replaced and their jet can be conveniently oriented in the desired direction. The tip models shown on this page deliver the most popular capacity values, the precision machined orifices can be protected against the risk of plugging by means of a filter fitting inside the nipples and clamps, which are designed for this purpose. Higher capacity tips, shown in the bottom table, do not need filter protection because of the large dimension of the orifices and are assembled onto 3/4" nipples.

See nipple and retaining nut codes at the bottom of the page. Tips with higher capacities and larger dimensions than those shown in the Catalogue can be delivered on request, together with specification of the nipples and retaining nuts.

Materials	B1	AISI 303 Stainless steel
	B31	AISI 316L Stainless steel
	T1	Brass

**Assembly fittings**

The table in the following page shows the coding for a typical assembly of a nozzle tip, by means of a retaining nut and a welding nipple. Threaded nipples, as well as a range of plastic or steel pipe clamps below, make it possible to choose the best suited solution and are also shown in our accessories Catalogue CTG AC20.

**Spray angle codes**

GXA	GXF	GXM	GXQ	GXU	GXW
0°	30°	45°	60°	90°	120°



Typical assembly with nipple and nut.

**Assembly fittings**



ZPM

ZPB

VEC

## FLAT JET NOZZLE TIPS

# GX

### STANDARD AND LARGE CAPACITIES

#### Standard capacity tips

GXA	GXF	GXM	GXQ	GXU	GXW	Code	Capacity at different pressure values								(lpm)
							0.5	1.0	1.5	2.0	3.0	4.0	5.0	7.0	10
	•	•	•	•	•	<b>1190</b>	0.78	1.10	1.34	1.55	1.90	2.19	2.45	2.90	3.47
	•	•	•	•	•	<b>1233</b>	0.95	1.35	1.65	1.90	2.33	2.69	3.01	3.56	4.25
•	•	•	•	•	•	<b>1310</b>	1.27	1.79	2.19	2.53	3.10	3.58	4.00	4.74	5.66
•	•	•	•	•	•	<b>1385</b>	1.57	2.22	2.72	3.14	3.85	4.45	4.97	5.88	7.03
•	•	•	•	•	•	<b>1490</b>	2.00	2.83	3.46	4.00	4.90	5.66	6.33	7.48	8.95
•	•	•	•	•	•	<b>1581</b>	2.37	3.35	4.11	4.74	5.81	6.71	7.50	8.87	10.6
•	•	•	•	•	•	<b>1780</b>	3.18	4.50	5.52	6.37	7.80	9.01	10.1	11.9	14.2
•	•	•	•	•	•	<b>1980</b>	4.00	5.66	6.93	8.00	9.80	11.3	12.7	15.0	17.9
•	•	•	•	•	•	<b>2124</b>	5.06	5.85	8.77	10.1	12.4	14.3	16.0	18.9	22.6
	•	•	•	•	•	<b>2153</b>	6.25	7.20	10.8	12.5	15.3	17.7	19.8	23.4	27.9
	•	•	•	•	•	<b>2194</b>	7.96	9.20	13.8	15.9	19.5	22.5	25.2	29.8	35.6
	•	•	•	•	•	<b>2245</b>	10.0	11.5	17.3	20.0	24.5	28.3	31.6	37.4	44.7

#### Large capacity tips

GXA	GXF	GXM	GXQ	GXU	GXW	Code	Capacity at different pressure values								(lpm)
							0.5	1.0	1.5	2.0	3.0	4.0	5.0	7.0	10
	•	•	•	•	•	<b>1781</b>	3.18	4.50	5.52	6.37	7.80	9.01	10.1	11.9	14.2
	•	•	•	•	•	<b>1981</b>	4.00	5.66	6.93	8.00	9.80	11.3	12.7	15.0	17.9
•	•	•	•	•	•	<b>2125</b>	5.06	7.16	8.77	10.1	12.4	14.3	16.0	18.9	22.6
•	•	•	•	•	•	<b>2154</b>	6.25	8.83	10.8	12.5	15.3	17.7	19.8	23.4	27.9
•	•	•	•	•	•	<b>2195</b>	7.92	11.2	13.7	15.8	19.4	22.4	25.0	29.6	35.4
•	•	•	•	•	•	<b>2246</b>	10.0	14.1	17.3	20.0	24.5	28.3	31.6	37.4	44.7
•	•	•	•	•	•	<b>2311</b>	12.7	17.9	21.9	25.3	31.0	35.8	40.0	47.4	56.6
•	•	•	•	•	•	<b>2490</b>	20.0	28.3	34.6	40.0	49.0	56.6	63.3	74.8	89.5
•	•	•	•	•	•	<b>2610</b>	24.9	35.2	43.1	49.8	61.0	70.4	78.8	93.2	111
	•	•	•	•	•	<b>2760</b>	31.0	43.9	53.7	62.1	76.0	87.8	98.1	116	139
	•	•	•	•	•	<b>3122</b>	49.8	70.4	86.3	99.6	122	141	158	186	223

#### Assembly fittings coding

Size	Locknut	Welding nipple	Male nipple	Seal
Standard size 3/8"	VAA 0038 xx	ZAA 1738 xx	ZHA 3838 xx	VDA 0038 P7
Large size 3/4"	VAA 0075 xx	ZAA 2775 xx	ZHA 7575 xx	VDA 0075 P7