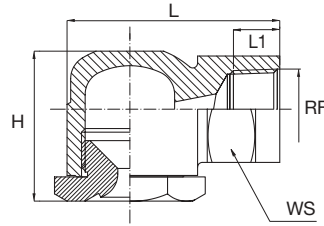


HOLLOW CONE NOZZLES

PN/PO



MOULDED PLASTIC NOZZLES

This range of hollow cone nozzles are made by plastic moulding, out of top quality glassfiber reinforced polypropylene with good mechanical strength and dimensional stability.

They produce small droplets, uniform distribution and are corrosion resistant: prices are moderate and are ideal for applications like air humidification, intensive product cooling and gas washing. Together with our pipe clamps, they offer the best solution in all cases where large quantity of nozzles have to be easily assembled onto pipe manifolds.

Maximum operating temperature 75° C.

Materials D6 Fiberglass reinforced PP

Angle	RF RG inch	PNS	POS	Code	DE mm	DU mm	Capacity at different pressure values (lpm)								Dimensions mm			
							0.5	0.7	1.0	2.0	3.0	5.0	7.0	10	H	L	L1	WS
70°	3/8	•	•	1170	2.0	2.9	0.69	0.82	0.98	1.39	1.70	2.19	2.60	3.10	31	44	20	22
80°	3/8	•	•	1260	2.7	3.5	1.06	1.26	1.50	2.12	2.60	3.36	3.97	4.75	31	44	20	22
90°	3/8	•	•	1390	3.7	3.8	1.59	1.88	2.25	3.18	3.90	5.03	5.96	7.12	31	44	20	22
		•	•	1670	4.4	5.2	2.74	3.24	3.87	5.47	6.70	8.65	10.2	12.2				
		•	•	1850	5.2	5.6	3.47	4.11	4.91	6.94	8.50	11.0	13.0	15.5				
		•	•	2115	6.1	6.3	4.69	5.56	6.64	9.39	11.5	14.8	17.6	21.0				
		•	•	2220	7.2	9.2	8.98	10.6	12.7	18.0	22.0	28.4	33.6	40.2				
	1/2	•	•	2320	9.5	10.5	13.1	15.5	18.5	26.1	32.0	41.3	48.9	58.4	42	55	35	30
•	•	2398	8.5	14.0	16.2	19.2	23.0	32.5	39.8	51.4	60.8	72.7						
130°	3/8	•	•	1170	1.7	3.5	0.69	0.82	0.98	1.39	1.70	2.19	2.60	3.10	31	44	20	22
		•	•	1260	1.9	5.0	1.06	1.26	1.50	2.12	2.60	3.36	3.97	4.75				
		•	•	1390	2.7	5.0	1.59	1.88	2.25	3.18	3.90	5.03	5.96	7.12				
		•	•	1460	3.1	5.0	1.88	2.22	2.66	3.76	4.60	5.94	7.03	8.40				
		•	•	1570	3.0	7.5	2.33	2.75	3.29	4.65	5.70	7.36	8.71	10.4				
		•	•	1670	3.4	7.5	2.74	3.24	3.87	5.47	6.70	8.65	10.2	12.2				
		•	•	1850	4.1	7.5	3.47	4.11	4.91	6.94	8.50	11.0	13.0	15.5				
		•	•	1980	3.6	12	4.00	4.73	5.66	8.00	9.80	12.7	15.0	17.9				
		•	•	2128	4.2	12	5.23	6.18	7.39	10.5	12.8	16.5	19.6	23.4				
		•	•	2208	6.0	12	8.49	10.0	12.0	17.0	20.8	26.9	31.8	38.0				
		•	•	2220	6.4	12	8.98	10.6	12.7	18.0	22.0	28.4	33.6	40.2				
		1/2	•	•	2129	4.3	14	5.23	6.18	7.39	10.5	12.8	16.5	19.6				
	•	•	2209	5.8	14	8.49	10.0	12.0	17.0	20.8	26.9	31.8	38.0					
	•	•	2221	6.3	14	8.98	10.6	12.7	18.0	22.0	28.4	33.6	40.2					
	•	•	2320	7.6	14	13.1	15.5	18.5	26.1	32.0	41.3	48.9	58.4					
	•	•	2420	9.0	14	17.1	20.3	24.2	34.3	42.0	54.2	64.2	76.7					



PO Male thread nozzles

For all 3/8" size nozzles we can supply PO type nozzles with 3/8" male thread.