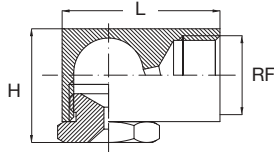
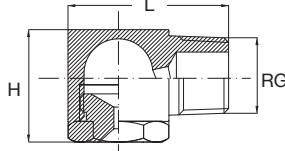


HOLLOW CONE NOZZLES

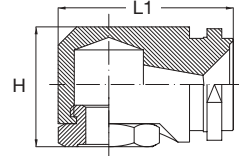
PE/PF



PE



PF



PT

STANDARD ANGLE SPRAY NOZZLES

These hollow cone nozzles work on the tangential flow principle and are manufactured by machine tool operation from metal bar stock. This offers versatile construction of small and lesser sized nozzles. In addition nozzles can be made on request from any special materials and alloys that are available as a bar stock.

- Materials
- B1 AISI 303 Stainless steel
  - B3 AISI 316 Stainless steel
  - T1 Brass

Standard spray angle

50°	RF	PEN	PFN	PTN	Code	DE	DU	Capacity at different pressure values (lpm)								Dimensions mm		
	RG							0.5	0.7	1.0	2.0	3.0	5.0	7.0	10	H	L	L1
	inch					mm	mm											
	3/8		•	•	2180	8.0	6.1	7.35	8.69	10.4	14.7	18.0	23.2	27.5	32.9	24	34	35
			•	•	2220	7.7	7.0	8.98	10.6	12.7	18.0	22.0	28.4	33.6	40.2			
			•	•	2390	9.5	9.0	15.9	18.8	22.5	31.8	39.0	50.3	59.6	71.2			

70°	RF	PES	PFS	PTS	Code	DE	DU	0.5	0.7	1.0	2.0	3.0	5.0	7.0	10	H	L	L1								
1/8		•	•	•	0390	0.9	1.0	0.16	0.19	0.23	0.32	0.39	0.50	0.60	0.71	19	24	26								
					0780	1.4	1.7	0.32	0.38	0.45	0.64	0.78	1.01	1.19	1.42											
					1160	2.2	2.1	0.65	0.77	0.92	1.31	1.60	2.07	2.44	2.92											
					1230	2.5	2.7	0.94	1.11	1.33	1.88	2.30	2.97	3.51	4.20											
					1390	3.4	3.1	1.59	1.88	2.25	3.18	3.90	5.03	5.96	7.12											
					1630	4.0	3.9	2.57	3.04	3.64	5.14	6.30	8.13	9.62	11.5											
					1780	4.4	4.4	3.18	3.77	4.50	6.37	7.80	10.1	11.9	14.2											
					1/4	•	•	•	•	0781	1.1	1.6	0.32	0.38	0.45				0.64	0.78	1.01	1.19	1.42	23	32	32
										1161	2.1	2.5	0.65	0.77	0.92				1.31	1.60	2.07	2.44	2.92			
										1231	2.6	2.8	0.94	1.11	1.33				1.88	2.30	2.97	3.51	4.20			
										1391	3.5	3.4	1.59	1.88	2.25				3.18	3.90	5.03	5.96	7.12			
										1631	4.6	4.3	2.57	3.04	3.64				5.14	6.30	8.13	9.62	11.5			
										1781	4.4	4.8	3.18	3.77	4.50				6.37	7.80	10.1	11.9	14.2			
										2117	5.5	5.3	4.78	5.65	6.75				9.55	11.7	15.1	17.9	21.4			
										3/8	•	•	•	•	1392				3.7	3.5	1.59	1.88	2.25			
1632	4.5	4.2	2.57	3.04	3.64	5.14	6.30	8.13	9.62						11.5											
1782	5.0	4.5	3.18	3.77	4.50	6.37	7.80	10.1	11.9						14.2											
2118	5.8	5.6	4.78	5.65	6.75	9.55	11.7	15.1	17.9						21.4											
2157	6.7	6.2	6.41	7.58	9.06	12.8	15.7	20.3	24.0						28.7											
2196	7.5	6.7	8.00	9.47	11.3	16.0	19.6	25.3	29.9						35.8											
2230	8.3	7.9	9.39	11.1	13.3	18.8	23.0	29.7	35.1						42.0											
1/2	•	•	•	•	2197	9.5	6.4	8.00	9.47	11.3	16.0	19.6	25.3	29.9	35.8	31	50	50								
					2231	9.5	7.5	9.39	11.1	13.3	18.8	23.0	29.7	35.1	42.0											
					2310	9.5	9.0	12.7	15.0	17.9	25.3	31.0	40.0	47.4	56.6											
					2391	9.5	10.5	15.9	18.8	22.5	31.8	39.0	50.3	59.6	71.2											
					2470	10.0	12.0	19.2	22.7	27.1	38.4	47.0	60.7	71.8	85.8											
3/4	•	•	•	•	2311	9.5	9.0	12.7	15.0	17.9	25.3	31.0	40.0	47.4	56.6	39	55	58								
					2392	10.7	9.7	15.9	18.8	22.5	31.8	39.0	50.3	59.6	71.2											
					2471	11.7	10.8	19.2	22.7	27.1	38.4	47.0	60.7	71.8	85.8											
					2550	11.7	12.0	22.5	26.6	31.8	44.9	55.0	71.0	84.0	100											
					2630	12.2	12.0	25.7	30.4	36.4	51.4	63.0	81.3	96.2	115											
					2700	12.7	12.0	28.6	33.8	40.4	57.2	70.0	90.4	107	128											
					2780	12.7	14.0	31.8	37.7	45.0	63.7	78.0	101	119	142											
					2860	12.7	16.1	35.1	41.5	49.7	70.2	86.0	111	131	157											
					2940	13.5	16.5	38.4	45.4	54.3	76.8	94.0	121	144	172											

## HOLLOW CONE NOZZLES

## PE/PF

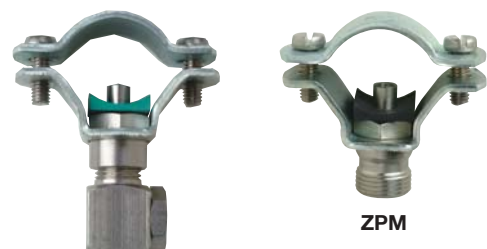
## WIDE ANGLE SPRAY NOZZLES

## Wide spray angle

	RF RG inch	PEW	PFW	PTW	Code	DE mm	DU mm	Capacity at different pressure values								Dimensions mm			
								(lpm) (bar)								H	L	L1	
								0.5	0.7	1.0	2.0	3.0	5.0	7.0	10				
120°	1/8	•	•		0390	09	1.1	0.16	0.19	0.23	0.32	0.39	0.50	0.60	0.71	19	24	26	
		•	•		0780	1.4	1.5	0.32	0.38	0.45	0.64	0.78	1.01	1.19	1.42				
		•	•		1200	1.5	3.9	0.82	0.97	1.15	1.63	2.00	2.58	3.06	3.65				
		•	•		1230	2.0	3.4	0.94	1.11	1.33	1.88	2.30	2.97	3.51	4.20				
		•	•		1270	2.2	3.8	1.10	1.30	1.56	2.20	2.70	3.49	4.12	4.93				
		•	•		1320	2.1	4.5	1.31	1.55	1.85	2.61	3.20	4.13	4.89	5.84				
		•	•		1390	3.6	3.1	1.59	1.88	2.25	3.18	3.90	5.03	5.96	7.12				
		•	•		1510	3.4	5.0	2.08	2.46	2.94	4.16	5.10	6.58	7.79	9.31				
		•	•		1700	4.5	5.2	2.86	3.38	4.04	5.72	7.00	9.04	10.7	12.8				
	1/4	•	•	•	•	0781	1.4	1.5	0.32	0.38	0.45	0.64	0.78	1.01	1.19	1.42	23	32	32
					•	1130	1.4	3.6	0.53	0.63	0.75	1.06	1.30	1.68	1.99	2.37			
					•	1160	1.4	4.0	0.65	0.77	0.92	1.31	1.60	2.07	2.44	2.92			
					•	1190	2.0	2.3	0.78	0.92	1.10	1.55	1.90	2.48	2.90	3.50			
					•	1271	2.2	3.8	1.10	1.30	1.56	2.20	2.70	3.49	4.12	4.93			
					•	1321	2.2	4.5	1.31	1.55	1.85	2.61	3.20	4.13	4.89	5.84			
					•	1391	3.6	3.1	1.59	1.88	2.25	3.18	3.90	5.03	5.96	7.12			
					•	1511	3.4	5.0	2.08	2.46	2.94	4.16	5.10	6.58	7.79	9.31			
					•	1600	3.4	5.2	2.45	2.90	3.46	4.90	6.00	7.75	9.17	11.0			
					•	1701	4.2	5.2	2.86	3.38	4.04	5.72	7.00	9.04	10.7	12.8			
					•	1780	3.7	6.0	3.18	3.77	4.50	6.37	7.80	10.1	11.9	14.2			
					•	1860	4.0	5.6	3.51	4.15	4.97	7.02	8.60	11.1	13.1	15.7			
	•	1940	5.0	5.7	3.84	4.54	5.43	7.68	9.40	12.1	14.4	17.2							
	•	2117	5.8	2.4	4.78	5.65	6.75	9.55	11.7	15.1	17.9	21.4							
	3/8	•	•	•	•	1512	3.5	5.0	2.08	2.46	2.94	4.16	5.10	6.58	7.79	9.31	24	34	35
					•	1601	3.5	5.2	2.45	2.90	3.46	4.90	6.00	7.75	9.17	11.0			
					•	1702	4.2	5.2	2.86	3.38	4.04	5.72	7.00	9.04	10.7	12.8			
					•	1781	3.7	6.0	3.18	3.77	4.50	6.37	7.80	10.1	11.9	14.2			
					•	1861	4.0	5.6	3.51	4.15	4.97	7.02	8.60	11.1	13.1	15.7			
					•	1941	5.0	5.7	3.84	4.54	5.43	7.68	9.40	12.1	14.4	17.2			
					•	2102	4.5	6.9	4.16	4.93	5.89	8.33	10.2	13.2	15.6	19.0			
					•	2110	5.0	6.2	4.49	5.31	6.35	8.98	11.0	14.2	16.8	20.0			
					•	2118	5.0	6.7	4.78	5.65	6.75	9.55	11.7	15.1	17.9	21.4			
					•	2133	6.1	8.0	5.43	6.42	7.68	10.9	13.3	17.2	20.3	24.3			
					•	2157	5.0	9.0	6.41	7.58	9.06	12.8	15.7	20.3	24.0	28.7			
					•	2172	6.2	7.5	7.02	8.31	9.93	14.0	17.2	22.2	26.3	31.4			
					•	2196	6.2	8.4	8.00	9.47	11.3	16.0	19.6	25.3	29.9	35.8			
					•	2220	6.2	9.7	8.98	10.6	12.7	18.0	22.0	28.4	33.6	40.2			
	1/2		•	•	2391	9.0	10.5	15.9	18.8	22.5	31.8	39.0	50.3	59.6	71.2	31	50	50	
	3/4		•		2630	10.3	15.0	25.7	30.4	36.4	51.4	63.0	81.3	96.2	115	39	55	58	

## Pipe clamp

Our Accessories Catalogue (CTG AC20) shows several types of pipe clamps allowing for an easy assembly of hollow cone nozzles onto a pipe manifold.



ZPM